

# The Library Review



Department for Children, Young People and Culture

**Bury**  
COUNCIL

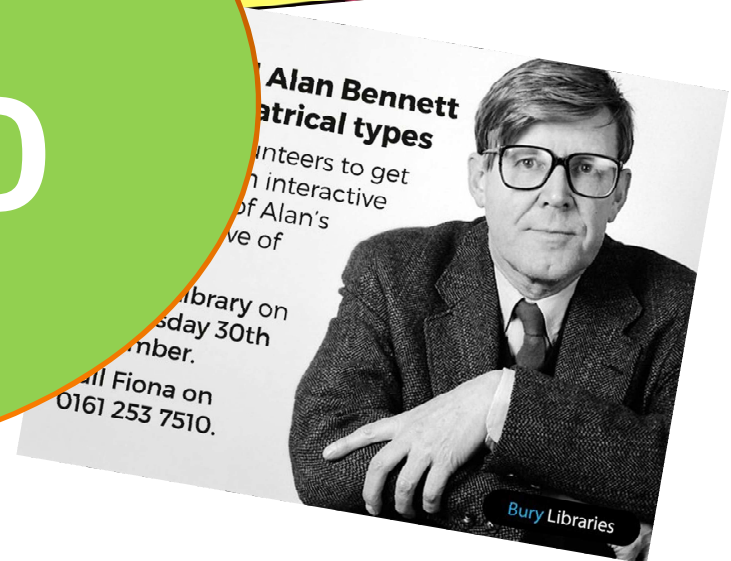
# Agenda

- Introductions
- Results from the 1<sup>st</sup> Public Consultation
- Exercise 1
- Discussion
- Exercise 2
- Next steps

# Principle 1

To provide a Library Service across the borough which **provide all residents with access to** electronic in number quality to for pleasure learning, to new skills and use of information.

98%

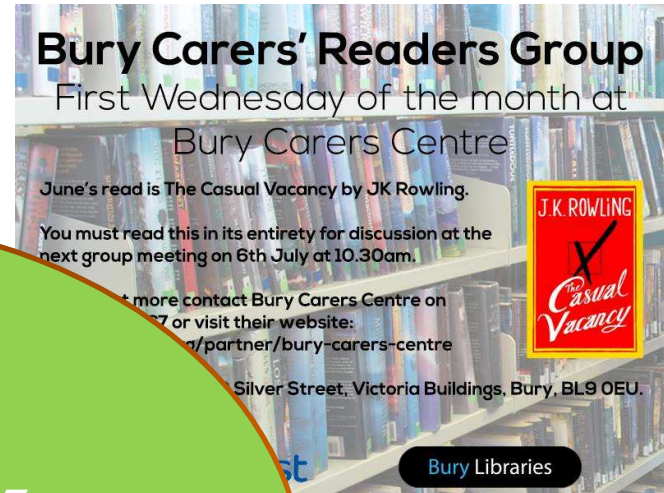




# Principle 2

To ensure that the needs of more **vulnerable resident** groups by Equality legislation taken into account in the provision of the services.

94%



# Principle 3

To ensure that the **resources committed to the library service** are used **efficiently** exploring running, maintenance and to work with other services.

73%



Department for Children, Young People and Culture

**Bury**  
COUNCIL

# Principle 4

To explore options for investing in technology to improve access to the library for example, extending opening hours, increasing digital services, enhancing physical access for those with sensory impairments.

89%



Department for Children, Young People and Culture

**Bury**  
COUNCIL

# Principle 5

To welcome the contribution that members of communities make to the service, support traditional services, training to promote digital inclusion.

70%



**Bury Libraries**

### Digital Buddy Peer Sessions

If you've never used a computer, smartphone before, or just want to enhance your existing skills, we're here to help.

Sessions are now available at Bury, Prestwich and Whitefield Libraries.

For more information or to book a slot with one of our friendly Digital Buddy Volunteers, please contact:

- Bury Library Computer Centre - 0161 253 7089
- Tottington Library - 0161 253 6652
- Prestwich Library - 0161 253 7214
- Whitefield Library - 0161 253 7510

**Thinking outside the books**

[/BURYLIBRARIES](#) [@BURYLIBRARIES](#) [WWW.BURY.GOV.UK/LIBRARIES](#) [SEARCH "BURY LIBRARIES"](#)

**Bury**  
COUNCIL

**Bury**  
COUNCIL

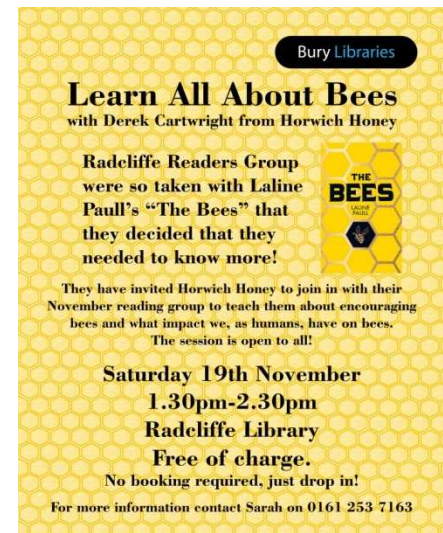
Department for Children, Young People and Culture



# Principle 6

To meet local aspirations for a network of community spaces across the borough in which the council and local communities can **work together** in meeting local needs.

82%



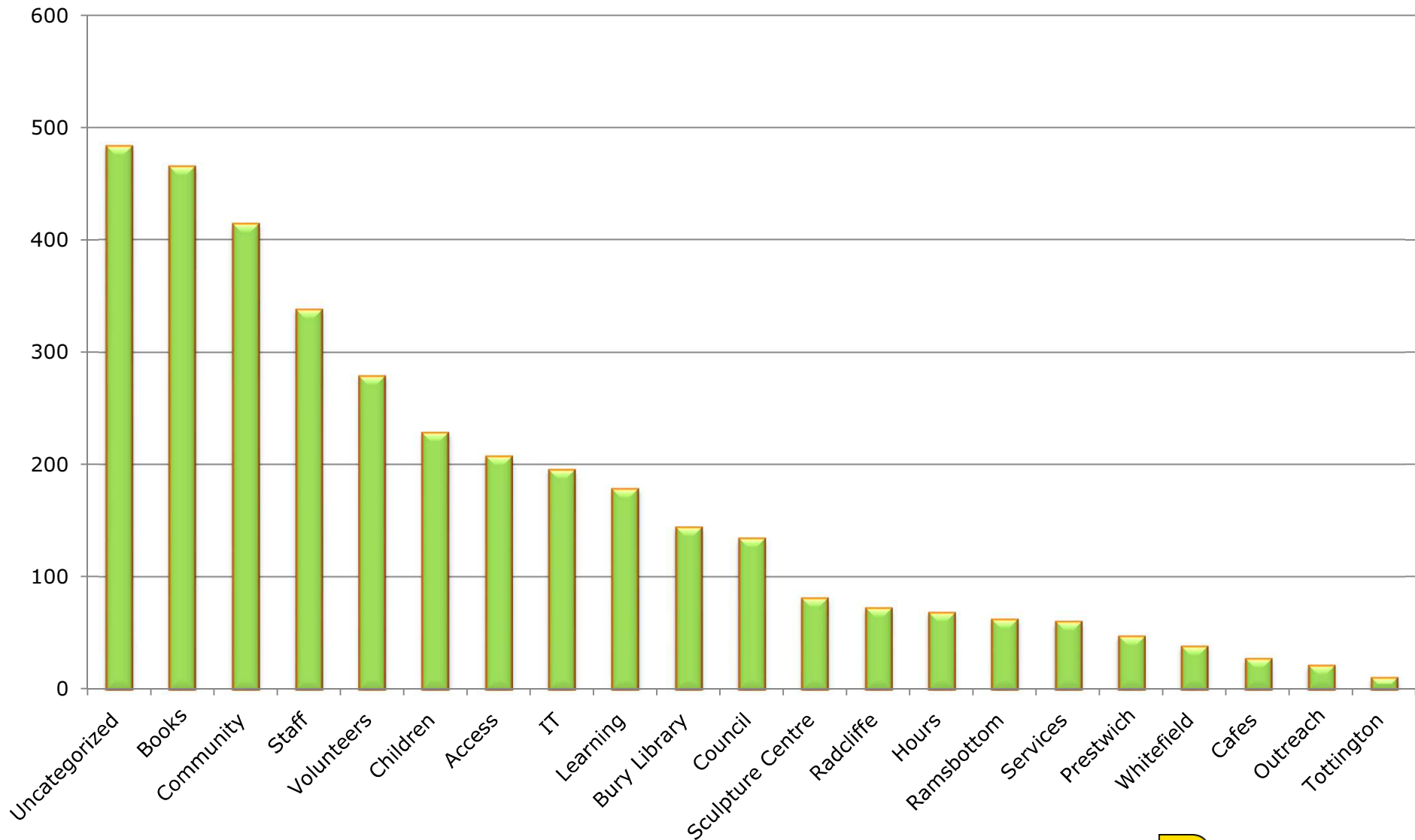
[/BURYLIBRARIES](#) [@BURYLIBRARIES](#) [SEARCH "BURY LIBRARIES"](#) [WWW.BURY.GOV.UK/LIBRARIES](#)



Department for Children, Young People and Culture



# Comments and Concerns





# Meeting our Statutory Duty

## **Public Libraries & Museums Act 1964**

*To provide a comprehensive and efficient library service for all persons' in the area that want to make use of it*

## **Equality Act 2010**

Public Sector Equality Duty

## **Best Value Duty 2011**



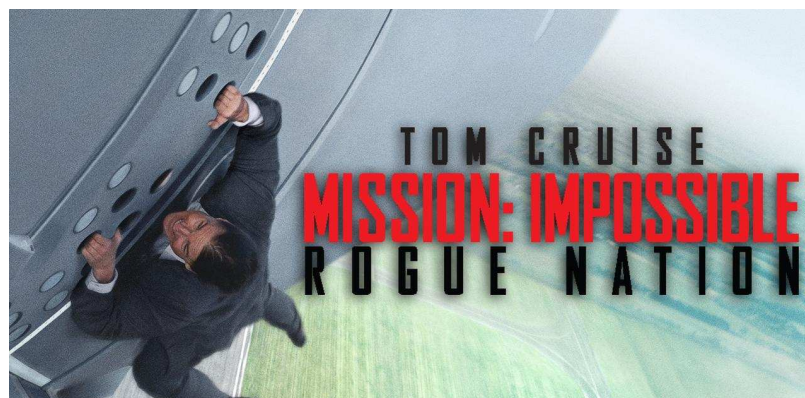
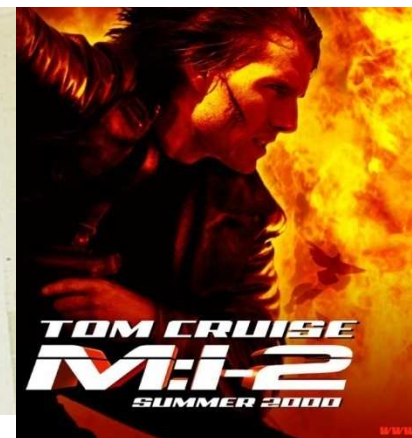
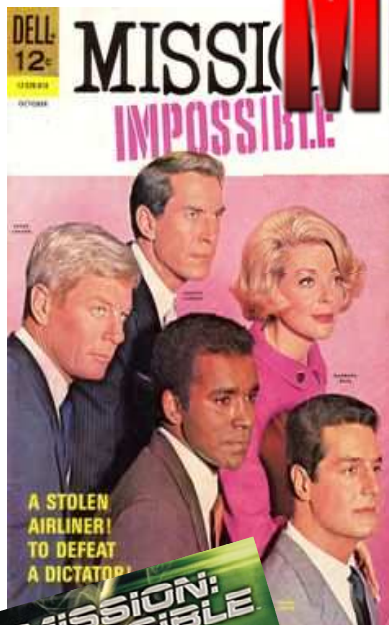


# Other Challenges

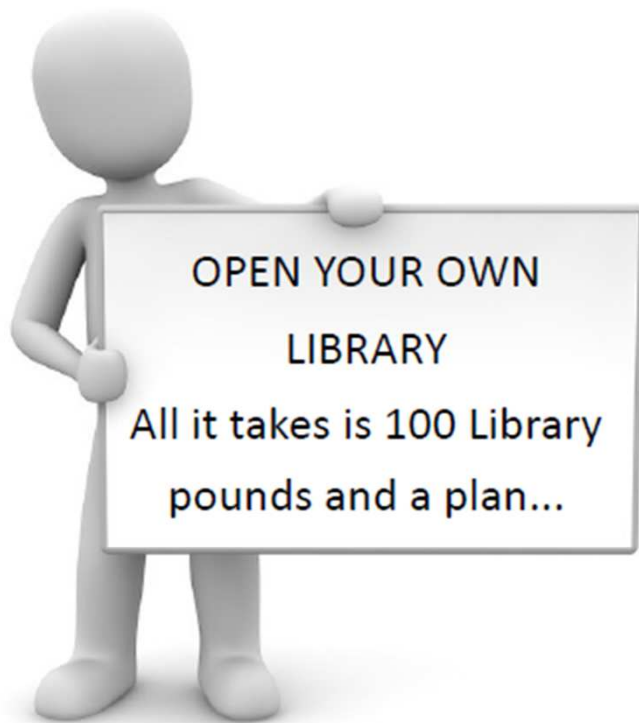
- Budget
- Buildings
- Location
- Access
- Usage
- Services
- Potential



# MISSION: IMPOSSIBLE



# Exercise 1 ~ Library Pounds



And we will give you the 100 Library pounds you need....

but first of all we have to take 25 of those pounds to make sure your library can open

Here is what your library needs



**Opening hours**—when are you going to open your library and for how long?



**Staff** - you will need 3 staff on duty when your library is open



**Books** —a broad selection for adults and children, providing for leisure and learning needs



**Public computers** —essential for accessing jobs, online learning, keeping in touch and being part of the modern world.



**Repairs and maintenance** —if something goes wrong you have to fix it



**Space** —a place to sit or study, chat or read. It needs to be welcoming, flexible and safe



**Services** — the things people need for life, leisure and learning. Your library should create opportunities and give people choice.





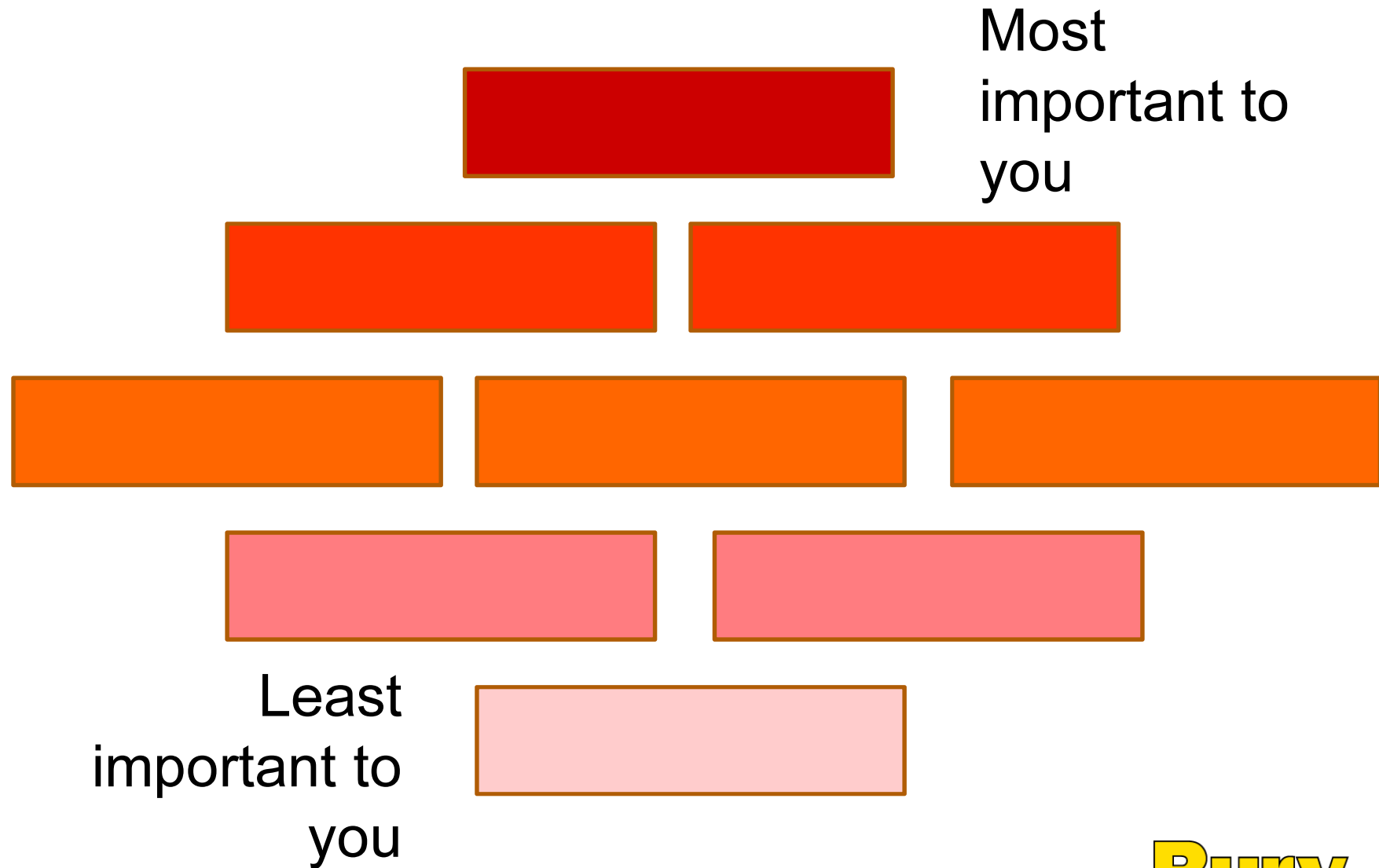
# 75 Library Pounds to spend





## Discussion

# Exercise 2 ~ YOUR priorities





# Next Steps

This consultation	Concludes December 2016
Report to Cabinet on proposed models/options for change	January 18 <sup>th</sup> 2017
Public consultation on proposed models/options for change	January – March 2017
Final report to Cabinet on decisions to be taken	March 8 <sup>th</sup> 2017
Staff consultation	April 2017 to May 2017
Implementation of changes	From July 2017

[library.suggestions@bury.gov.uk](mailto:library.suggestions@bury.gov.uk)